



Serengeti Air Safari 9 Days – 8 Nights (Mid July to Mid October)

ence
e Flight to Serengeti National Park.

Serengeti

Serengeti

Serengeti

Serengeti

Serengeti

Serengeti

Serengeti

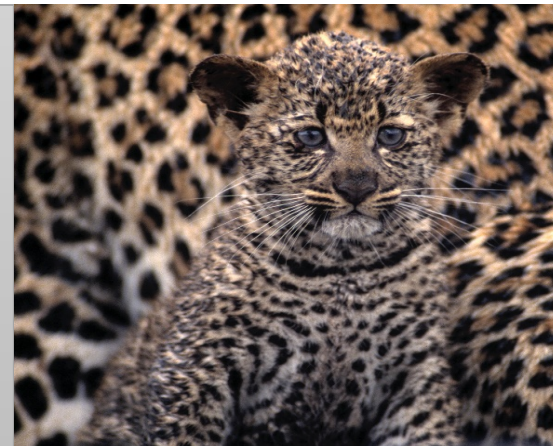
e flight to Arusha.

Schedule Flight to Serengeti.

Depart from your Arusha Hotel to Arusha Airport for schedule flight to Serengeti National Park. On arrival at Seronera Airstrip by our guide, drive to your Camp with game viewing drive en-route. You will spend two days exploring the Central Serengeti National Park is undoubtedly the best-known wildlife sanctuary in the world, unequalled for its natural beauty and it has the greatest concentration of plains game in Africa. You will arrive at your Camp late afternoon.

The greatest wildlife spectacle on earth - the great migration of wildebeest and zebra. The resident population of lion, antelope, giraffe, and birds is also impressive. There's a wide variety of accommodation available, from luxury lodges to The park covers 5,700 sq. miles, (14,763 sq. km), it's larger than Connecticut, with at most a couple hundred vehicles You will arrive at your camp late afternoon.

Overnight at Serengeti Kati Kati Tented Camp or Similar.



Day – 3 and 4 – Exploring Eastern Serengeti.

Two full days exploring the vast Eastern Serengeti and its endless plains.

The Park can be divided into 3 sections. The popular southern/central part (Seronera Valley), is what the Maasai called the “serengeti” land of endless plains. It's classic savannah, dotted with acacias and filled with wildlife. The western corridor is marked by the Mara River, and has more forests and dense bush. The north, Lobo area, meets up with Kenya's Maasai Mara Reserve, is the least visited. It is the migration for which Serengeti is perhaps most famous. Over a million wildebeest and about 200,000 zebras flow south from the northern hills to the southern plains for the short rains every October and November, and then swirl west and north after the long rains of April, May and June. So strong is the ancient instinct to move that no drought, gorge or crocodile infested river can hold them back. The Wildebeest travel through a variety of parks, reserves and protected areas and through a variety of habitat. Join us to explore the different forms of vegetation and landscapes of the Serengeti ecosystem and meet some of their most fascinating inhabitants.

Meals and overnight at Mawe Luxury Tented Camp or Similar

Days 7 and 8 – North Serengeti and Mara River Crossing.

When you depart from the central Serengeti, drive to north Serengeti with game viewing drive en-route, you will enjoy the next 4 days in the North Serengeti.

North Serengeti is wedged between the Central Serengeti and Kenya's Masai Mara National Reserve to the north – is remote and less accessible. Travelers who make it to this corner of the Serengeti will be rewarded with gorgeous landscapes of green acacia woodlands dotting open savanna, incredible wildlife, and most importantly, with massive herds of wildebeest and zebra making dangerous crossing of the crocodile infested Mara River during the Great Migration and the Mara River crossing takes place from mid July to Mid October. This sector of the park is also home to the greatest concentration of elephant in the park as well as good numbers of lion, leopard, cheetah and hyena and diverse resident animals such as giraffe, topi, eland and

Overnight at Mara River Tented Camp or Similar.



**Day19- Schedule flight to Arusha.**

After breakfast you will be transferred to Kogatende Airstrip for a schedule flight to Arusha. On arrival at Arusha Airport you will be met and transferred to Arusha City or you want to connect with a flight to Zanzibar.